

## Single-mode Connectorized IFC

### TELECOM OUTSIDE PLANT

An IFC (Intra-facility) cable consists out of one or more sub-units, which contain twelve 900 micron fibers. It can be pre-connectorized at one or both ends.

IFC cable is typically used indoors

- Between an optical distribution frame and the cable vault
- To make a connection between optical distribution frames
- Between patching and splicing shelves inside an optical distribution frame

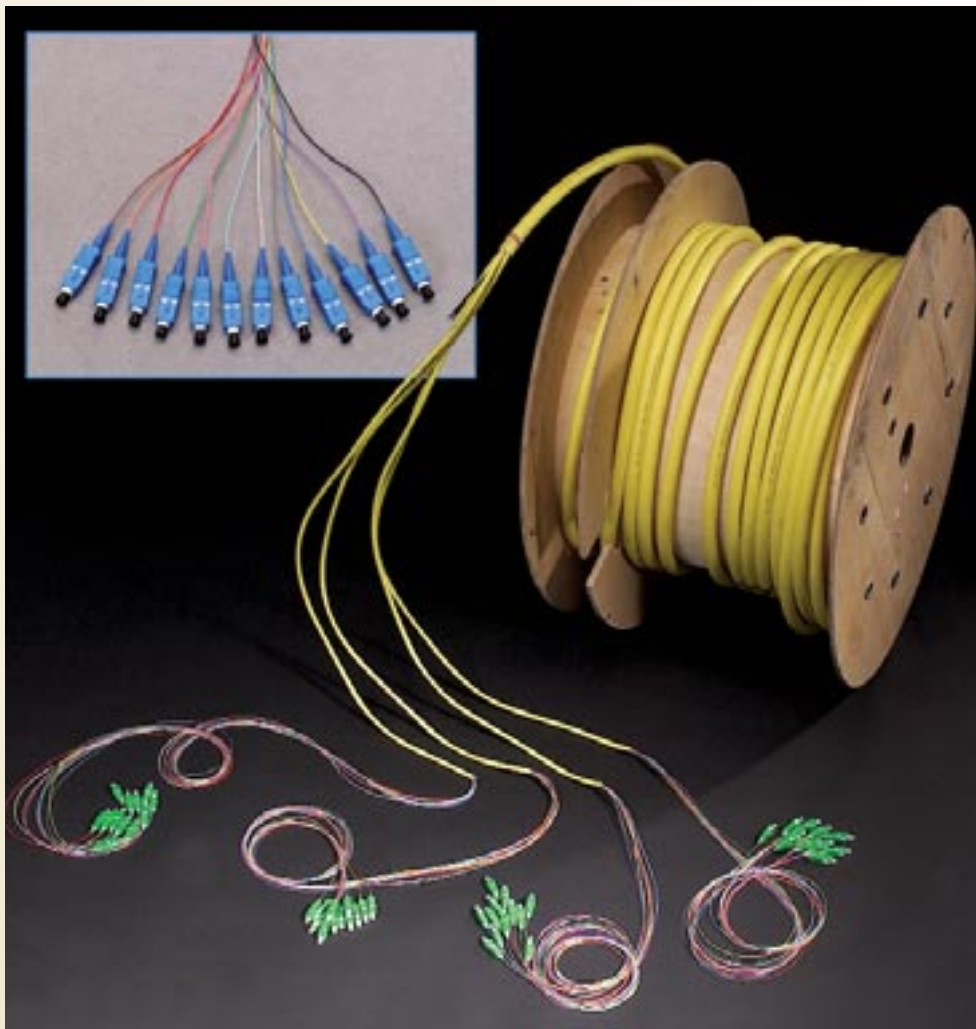
An IFC cable design can offer advantages over standard patchcords because it eliminates the need for a fiber-optic ducting system. The glass-reinforced central strength member of the cables ensures that the cable can be laid directly on standard support systems.

The low-smoke zero-halogen outer jacket of the cable can be stripped back in the field for additional flexibility.

Cables are available with a wide variety of fiber counts and connector types.

They are delivered on a drum to facilitate a fast, safe and easy installation.

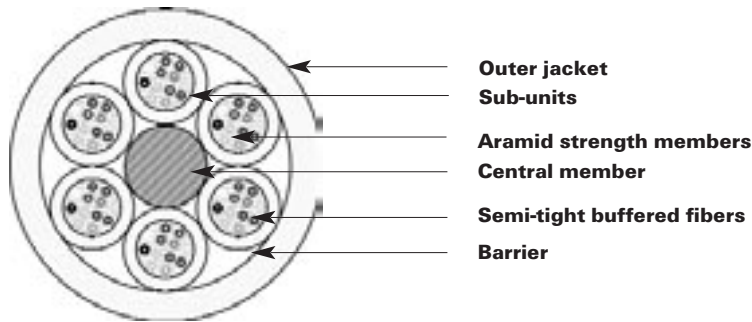
All IFC assemblies are compatible with the TYCO FIST system.







Single-Mode Intra  
Facility Cable

# Single-Mode Intra Facility Cable

## Cable construction



## Dimensions

	IFC 12		IFC 12	IFC 48	IFC 72
	Without strength member				
Outside diameter (mm)	7		7	16	19
Sub-unit diameter (mm)	No sub-units		No sub-units	5	5
					

**OCI** **X** - **X** - **XX** - **XXX** **X** **XX** **ASEA** - **XX**

### Connectorized simplex cable type

**P** Pigtail  
**J** Jumper

### Ferrule centering method

**T** Tuned SC, FC, LC  
**C** Centered E2000

### Connector type at end 1

Min.return loss	Connector type			
	SC	FC	E2000	LC
50 dB (UPC)	S1	F1		L1
60 dB (APC 8°)	S2	F2	E2	
60 dB (APC 9°)	S3			

### Cable length

**001, 002, ... 010, ...** always use  
3 digits for cable length

### Connector type at end 2

Same options as for connector type at end 1.  
Select **XX** in case of a pigtail.

### Fiber type

**ASEA** Single-mode, semi-tight,  
900μ, LSZH outer jacket

### Fiber count

**2N** 12F-no central strength member  
**12** 12F-with central strength member  
**48** 48F-with central strength member  
**72** 12F-with central strength member

### Cable length unit

**M** Meter  
**D** Decimeter (only for jumpers)

## Tyco Electronics Corporation

### Telecom Outside Plant

8000 Purfoy Road  
Fuquay Varina - NC 27526-9349  
Tel.: 1-919-557-8900  
Fax: 1-919-557-8598

## Tyco Electronics Raychem NV

### Telecom Outside Plant

Diestsesteenweg 692  
3010 Kessel-Lo, Belgium  
Tel.: 32-16 351 011  
Fax: 32-16 351 697  
www.tycoelectronics.com

Tyco is a trademark of Tyco International

The information given herein, including drawings, illustrations and schematics which are intended for illustration purposes only, is believed to be reliable. However, Tyco Electronics makes no warranties as to its accuracy or completeness and disclaims any liability in connection with its use. Tyco Electronics' obligations shall only be as set forth in Tyco Electronics' Standard Terms and Conditions of Sale for this product and in no case will Tyco Electronics be liable for any incidental, indirect or consequential damages arising out of the sale, resale, use or misuse of the product. Users of Tyco Electronics products should make their own evaluation to determine the suitability of each such product for the specific application.

TC 590/DS/1 07/02