



## Next Generation Frame (NGF)

The Next Generation Frame product line has fiber frames designed to fit a variety of termination, splice, and storage applications. Frames can accommodate up to 1152 (standard connector)/1728 (small-form-factor connectors) fibers per frame.

Each frame option is designed with an emphasis on superior cable management and ease of use, including features such as ample trough space for cable and jumpers, easy access to connectors, and storage for jumpers. The frame sections are shipped from the factory fully equipped with all cable management hardware including a built-in jumper storage panel.

### **FIBER TERMINATION BLOCKS (FTB)**

Fiber Termination Blocks (FTBs) are available with SC, FC, ST and E2000 adapters in block configurations of 72- or 96-positions. Also, 144-position FTBs are available using LC adapters. FTBs utilize sliding adapter packs to gain easy access to both the front and rear of connectors. There is also a block configuration available to accommodate Value-Added Modules (MicroVAMs) for applications requiring splitters or WDMs. FTBs can be ordered with or without intrafacility (IFC) or outside plant cable.

### **FIBER COMBINATION BLOCKS (FCB)**

Fiber Combination Blocks (FCBs) provide termination and on-frame splicing capabilities, all in one block. The block occupies two mounting positions on the frame section. They are available with SC, FC, ST and E2000 adapters in block configurations of 72- or 96-positions.

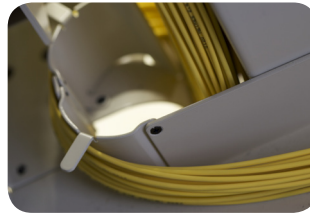
144-position FCBs are also available using LC adapters.

# Next Generation Frame (NGF)

## FEATURES

### Ample Trough Space

- Reduces jumper pile-up and congestion
  - Reduces maintenance time due to easy removal and tracing of jumpers
  - Minimizes risk of microbends or damage to fiber



Ample Trough Space

### Built-in Jumper Storage Panel

- Minimizes number of required jumper lengths
- Maintains fiber bend radius
- Simplifies frame installation
  - Saves money by reducing the number of different jumper lengths that have to be kept in inventory
  - Minimizes risk of microbends or damage to fiber



Sliding Adapter Packs

### Sliding Adapter Packs

- Promotes high density
- Provides easy access to connectors
  - Saves valuable floor space
  - Reduces time required for operations and maintenance

### Intelligent Cable Routing System

- No fiber cross-over points
- Multiple vertical trough ways
  - Reduces maintenance time due to easier removal and tracing of jumpers and minimizes fiber "weaving"



Intelligent Cable Routing System



NGF

### Contact us:

Tyco Electronics Raychem bvba  
Diestsesteenweg 692  
3010 Kessel-Lo  
Belgium  
Tel +32 16 351 011  
Fax +32 16 351 697

[www.te.com](http://www.te.com)  
[www.te.com/adckrone](http://www.te.com/adckrone)



TE Connectivity and TE connectivity (logo) are trademarks of the TE Connectivity Ltd. family of companies.

While TE Connectivity has made every reasonable effort to ensure the accuracy of the information in this document, TE Connectivity does not guarantee that it is error-free, nor does TE Connectivity make any other representation, warranty or guarantee that the information is accurate, correct, reliable or current. TE Connectivity reserves the right to make any adjustments to the information contained herein at any time without notice. TE Connectivity expressly disclaims all implied warranties regarding the information contained herein, including, but not limited to, any implied warranties of merchantability or fitness for a particular purpose. The dimensions in this document are for reference purposes only and are subject to change without notice. Specifications are subject to change without notice. Consult TE Connectivity for the latest dimensions and design specifications.