

# FiberGuide

## Adaptation kits

The FiberGuide fiber raceway system consists of a complete set of standard components designed and manufactured to ensure total off-frame protection and ease of use.

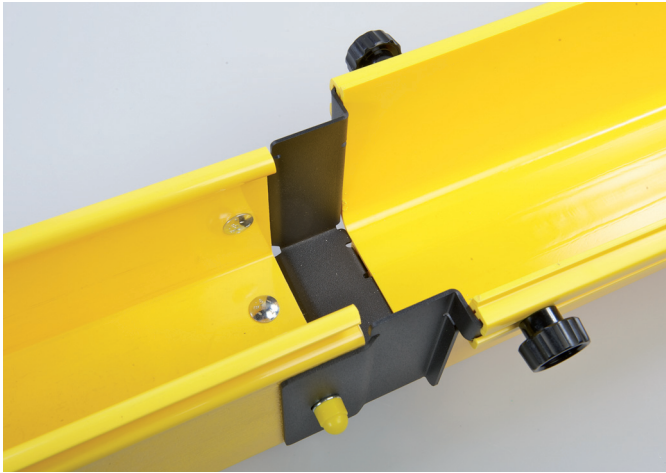
The FiberGuide system protects and routes fiber optic patch cords and multi-fiber cable assemblies to and from fiber splice enclosures, optical distribution frames and fiber optic terminal devices. The system ensures a two-inch (50mm) minimum bend radius is maintained throughout the system. It provides total off-frame protection and ease of use and includes horizontal and vertical straight sections, horizontal and vertical elbows, downspouts, junctions and numerous support hardware and flex tube kits.

### Adaptation kits

Adaptation kits make it possible to easily migrate from Lightrax to FiberGuide. They are easy to install and offer the opportunity to seamlessly expand your current raceway system.

Adaptation kits are available for the following sizes: 4x4", 4x6/4x8", 4x12/4x8" and 4x12".

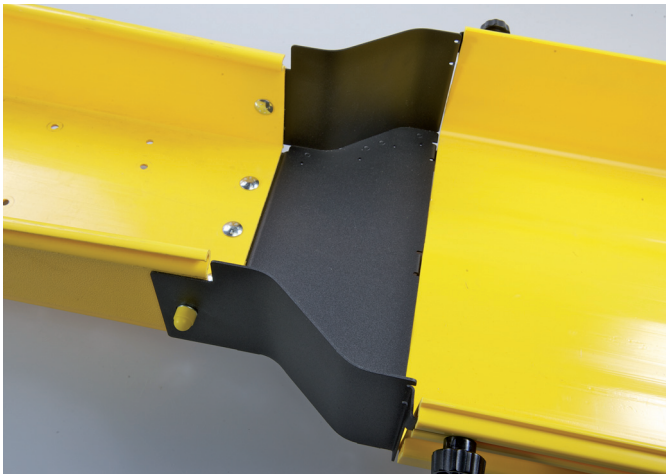
## Ordering information



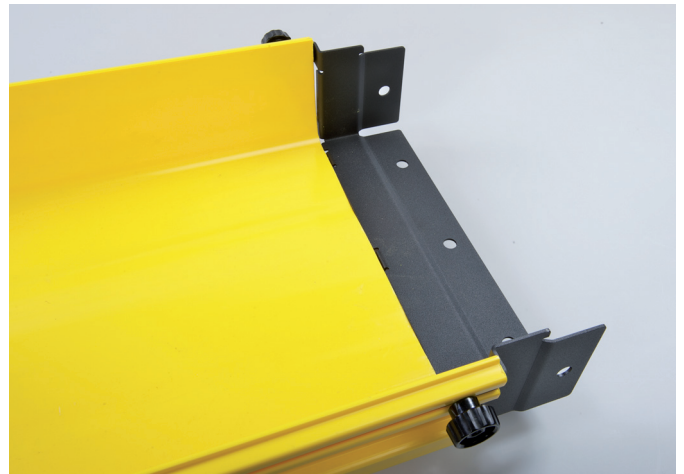
Adapter Kit 4" to 4" (100 to 100mm)  
**FGS-FRH-4/4ADP** replaces FGS-FRH-K01



Adapter Kit FGS 4x6" to Lightrax 4x8" (150 to 200mm)  
**FGS-FRH-6/8ADP** replaces FGS-FRH-K02



Adapter Kit FGS 4x12" to Lightrax 4x8" (300 to 200mm)  
**FGS-FRH-12/8ADP** replaces FGS-FRH-K03



Adapter Kit 12" to 12" (300 to 300mm)  
**FGS-FRH-12/12ADP** replaces FGS-FRH-K04

FiberGuide, TE (logo) and TE Connectivity are trademarks of the TE Connectivity group of companies and its licensors.

The information given herein, including drawings, illustrations and schematics which are intended for illustration purposes only, is believed to be reliable. However, TE Connectivity makes no warranties as to its accuracy or completeness and disclaims any liability in connection with its use. TE Connectivity' obligations shall only be as set forth in TE Connectivity' Standard Terms and Conditions of Sale for this product and in no case will TE Connectivity be liable for any incidental, indirect or consequential damages arising out of the sale, resale, use or misuse of the product. Users of TE Connectivity products should make their own evaluation to determine the suitability of each such product for the specific application.

Tyco Electronics Raychem bvba  
Diestsesteenweg 692  
3010 Kessel-Lo, Belgium  
Tel 32-16 351 011 (USA)1-919-557-8900  
Fax 32-16 351 697 (USA)1-919-557-8498  
[www.telecomnetworks.com](http://www.telecomnetworks.com)  
[www.te.com](http://www.te.com)  
TC 1077/DS/2 05/12

