

Cross Connection Cabinet 82

Cross Connection Cabinet 82

The cabinet 82 could be used as a distribution box for copper and FO cables.

Dimensions W x H x D in mm: 754 x 998 x 310 (without plinth)

- ❑ This cabinet, made of fibre-reinforced polycarbonate, is available with or without ventilation, depending on the particular type of application.
- ❑ The door comes with a double locking system. Hinges can be fitted on the right or left.
- ❑ Door retainer in the scope of delivery

Cabinet 82A / 82AB

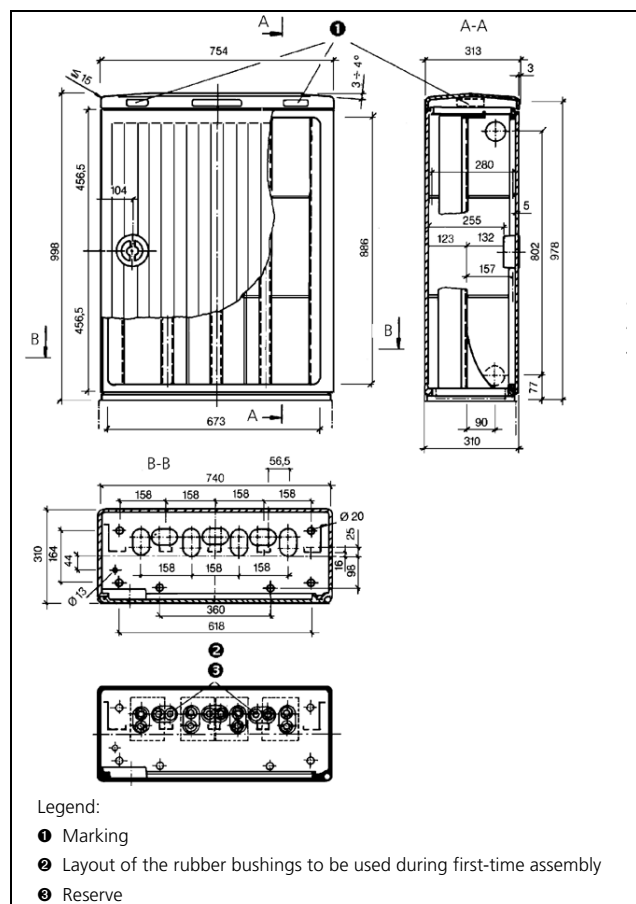
- ❑ Without ventilation, for example for use as a cross connection cabinet for up to 1200 pairs (cable head 80) or 1600 pairs (cable head 80K-NT) or as a fiber optic distribution point (KRONE FiberPLUS LMSys)
- ❑ Split base plate with rubber bushings

Technical specifications:

Dimensions:	See dimension drawing
Application range:	Air temperature: -30 to +60°C Rel. humidity: 5% - 95%
Protection class:	Cabinet 82A / 82AB: IP 54 acc. to IEC 529
Cabinet materials:	Fibre-reinforced polycarbonate, painted
Flammability class:	UL 94V-0
Colour:	Grey (similar to RAL 7038)
Metal parts:	Mounting rack: stainless steel, other parts: sheet-steel, galvanised, yellow-chromated
Recycling:	Polyester can be fully recycled



Cabinet 82A on plinth 1060. Example of a 3-vertical assembly (900 pairs) with cable heads 80



Cross Connection Cabinet 82

Order data:	Order-No:	Description	Weight/Pack	Pack
	6982 1 101-40	Cross connection cabinet 82A with jumper frame for cable heads 80 for up to 1200 pairs (12 cable heads 80 for 100 pairs) or 1600 pairs (cable heads 80K-NT) door with double locking system, prepared for the installation of profile-cylinders (acc. to DIN 18252) by the customer	37.000 kg	1 piece
	6982 1 021-40	Cross connection cabinet 82 AB Door with two-fold locking mechanism, designed for customer installation of profile cylinders satisfying DIN 18252, with a cylinder length of 37-45 mm	53.000 kg	1 piece

Special accessories:	Order-No:	Description
	7025 2 017-00	Plinth 1060, standard for underground cable entry; fully assembled
	7025 2 027-00	Plinth 1060, comfort for cable conduit systems; fully assembled
	7056 2 360-00	Half profile cylinder with KRONE lock system 19 with one key