

Cross Connection Cabinet 83 with Plinth 83

Cross Connection Cabinet 83

This weather-proof cabinet, made of glass-fibre reinforced polycarbonate, is available without ventilation.

- The double door comes with a three-point lock and double locking system, designed for use with half-profile cylinders.
- Mounting racks made of stainless steel
- Suitable foundation: plastic plinth 83

Cabinet 83A

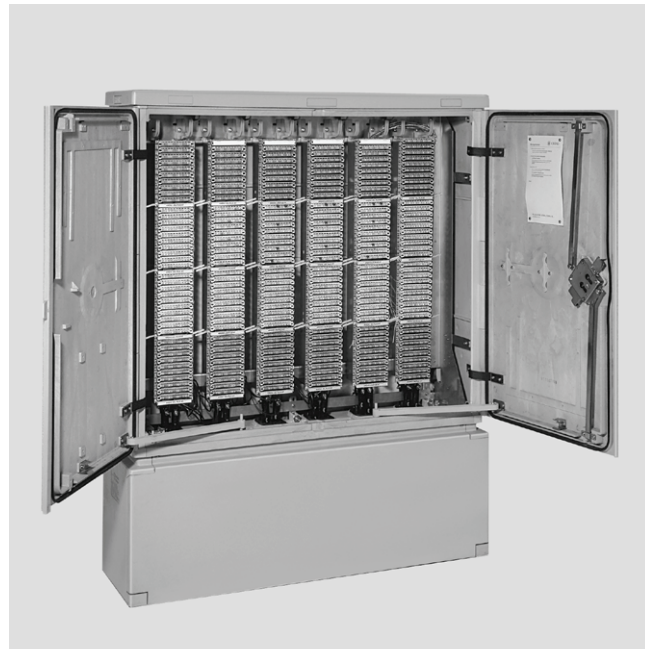
- Without ventilation
- For use as a cross connection cabinet for up to 1800 pairs (cable head 80 or cable head-NT)
Special solutions for 2400 pairs using cable head 80K-NT or modular cable heads on request
- Protection class: IP 54 according to IEC 529
- Split base plate with rubber bushings for incoming cables

Cabinet 83AB

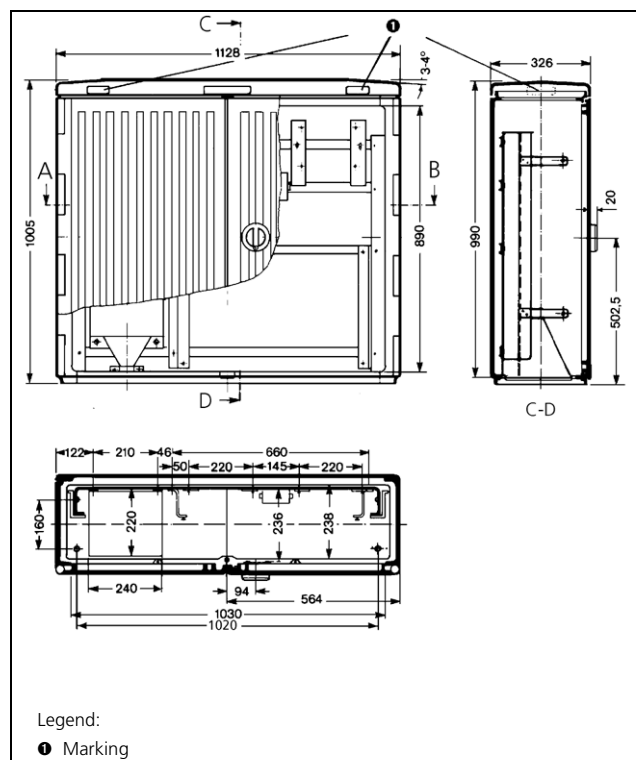
- Without ventilation
- For application as FO distribution point with KRONE FiberPLUS LMSys
- Protection class: IP 54 according to IEC 529
- Split base plate with rubber bushings for incoming cables

Technical specifications:

Dimensions:	See dimension drawing
Application range:	Air temperature: -30 to +60°C Rel. humidity: 5% - 95%
Cabinet materials:	Fibre-reinforced polycarbonate, painted
Flammability class:	UL 94V-0
Colour:	Grey (similar to RAL 7038)
Metal parts:	Mounting rack: stainless steel, other parts: sheet-steel, galvanised, yellow-chromated
Recycling:	Polyester can be fully recycled



Cabinet 83A on plinth 83, with 2400 pairs (cable head 80K-NT)



Dimension drawing Cabinet 83

Cross Connection Cabinet 83 with Plinth 83

Order data:	Order-No:	Description	Weight/Pack	Pack
	6983 1 001-40	Cross connection cabinet 83A jumper rack to accommodate up to 18 x 100 pairs (cable head 80 or cable head 80K-NT); door with double locking system designed for installation of profile cylinders by the customer acc. to DIN 18252, with a cylinder length of 37-45 mm	55.400kg	1 piece
	6983 1 021-40	Cross connection cabinet 83 AB Door with two-fold locking mechanism, designed for customer installation of profile cylinders satisfying DIN 18252, with a cylinder length of 37-45 mm	54.000 kg	1 piece

Special accessories:	Order-No:	Description
	7056 2 360-00	Half profile cylinder with KRONE lock system 19 with one key

Cross Connection Cabinet 83 with Plinth 83

Plinth 83

The glass-fibre reinforced polycarbonate plinth 83 provides the foundation for the cabinet 83 family.

Its main functions are:

- ❑ Guiding the main and branching cables into the cabinet
- ❑ Securing the cabinet in the ground

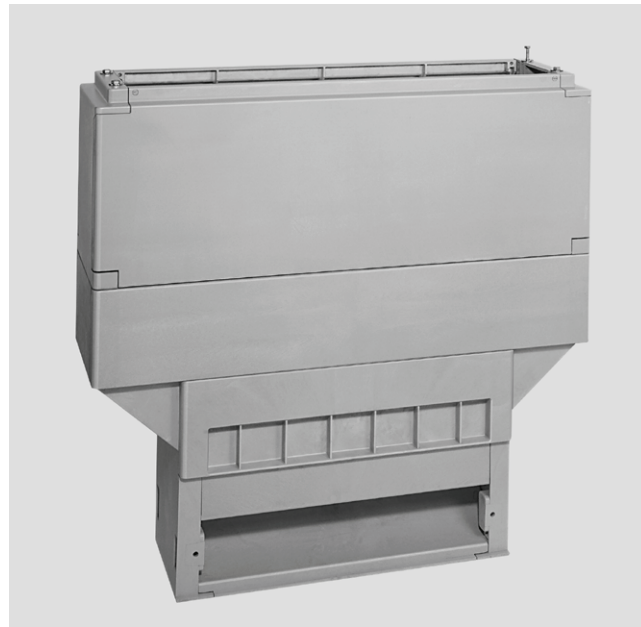
Plinth 83 consists of 2 main sections:

Above-ground section

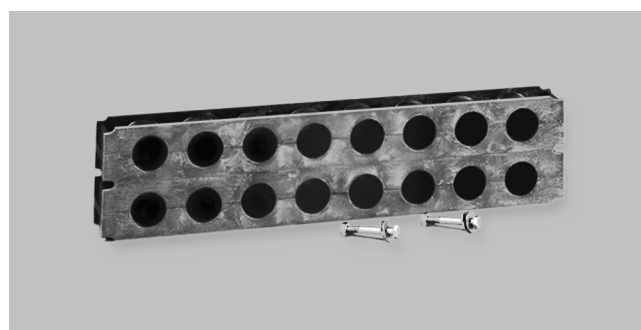
- ❑ Height: 400 mm, with removeable front flap. For security reasons, this flap can only be removed after the doors of cabinet 83 have been opened

Underground section

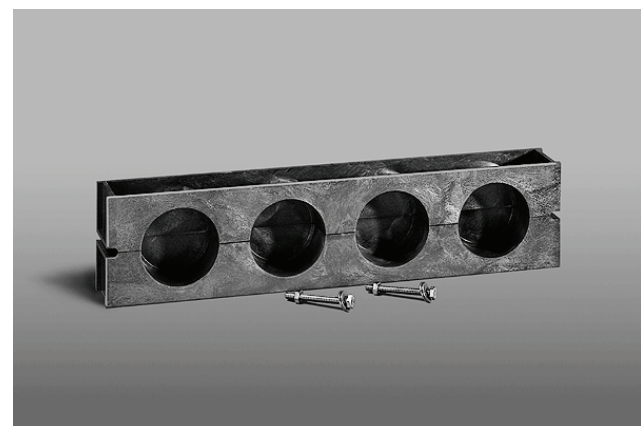
- ❑ Cable entry and cable guide, $r = 300$ mm, for redirecting cables to the vertical
- ❑ Connection plates for cable conduits can be attached to the front opening
- ❑ Four knock-out openings on each side, $\varnothing 56$ mm, enable cables to be fed in from the sides
- ❑ The upper and lower sections are connected to each other at ground level by pre-stressed break-off joints
- ❑ The plinth features a modular design. Individual plinth parts can be easily replaced without removing existing cables.
- ❑ In contrast to the earlier concrete plinth, plinth 83 features improved handling and is supplied fully assembled; this reduces installation costs considerably.
- ❑ The delivery also includes the fixing part (four bolts, nuts, washers) for connecting the plinth to cabinet 83.



Plinth 83

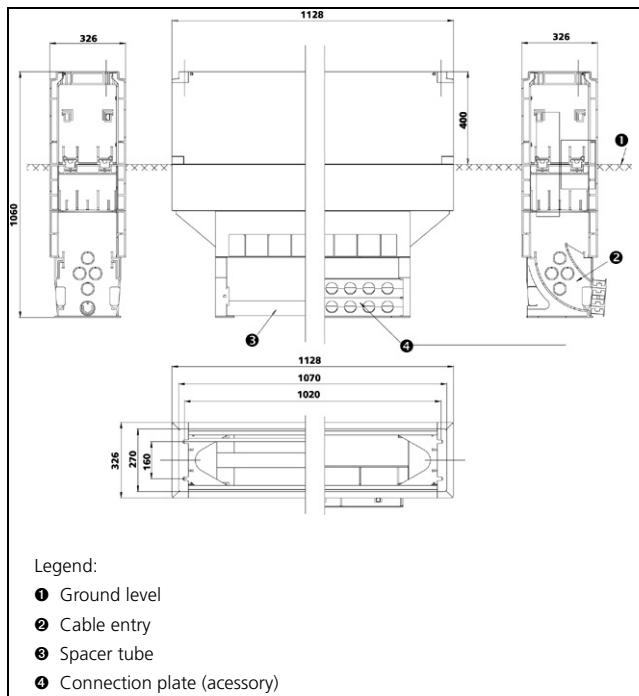


Connection plates 16 DN 50 for 16 conduits with an overall diameter 50 mm



Connection plates 4 DN 100 for 4 conduits with an overall diameter of 110 mm

Cross Connection Cabinet 83 with Plinth 83



Technical specifications:

Used for:	Cabinet 83
Excavation depth:	660 mm
Cable fixing rail:	no
Pre-stressed break-off joints:	yes
Cabinet plastic materials:	Section above ground: Glass-fibre reinforced polycarbonate, Colour: grey (similar RAL 7035) Section below ground Side and front areas Glass-fibre reinforced polycarbonate, Colour: grey (similar RAL 7035) Filter plates, cable guide, cable conduits
Connection plates:	Polypropylene, primarily black, some deviation in colour is possible
Metal parts:	Sheet-steel, galvanised, yellow-chromi- zes or stainless steel

Order data:

Order-No:	Description	Weight/Pack	Pack
6985 2 001-00	Plinth 83 fully assembled for cabinets 83A without connection plate for cable conduits	29.300 kg	1 piece

Special accessories:

Order-No:	Description
7025 2 006-00	Connection plate 16 DN 50 for plinth 1060 and plinth 83 for accommodating up to 16 cable conduits with an overall diameter of 50mm
7025 2 005-00	Connection plate 4 DN 100 for plinth 1060 and plinth 83. for accommodating up to 4 cable conduits with an overall diameter of 110mm

Spare parts:

Order-No:	Description	Weight/Pack	Pack
7025 2 003-00	Pre-stressed break-off joints with fixing materials for plinth 1060 and plinth 83	0.350 kg	4 pieces