



# A world of fiber

## Product overview

Solutions for fiber optic networks

# Solutions for fiber optic networks

Drawing on years of experience and expertise in materials science technology, optics, product design and process engineering, Tyco Electronics's fiber solutions provide the key to your current and future network requirements.

Tyco Electronics's family of modular fiber products enhance the design, implementation and maintenance of fiber optic networks - from exchange to customer premises.

## Exchange elements

The 'exchange elements' group of products offers a complete range of optical distribution frames.



## External plant elements

The 'external plant elements' group of products includes a wide choice of closures and a cabinet for use in an external network.



## Customer premises elements

In the 'customer premises elements' group, different box ranges are available for use at the end of the optical network.



## Accessories

The 'accessories' group of products supports the three major product groups by providing necessary items such as pigtails and jumpers or a fiber ducting system for the exchange elements.

# The exchange elements

Tyco Electronics’s racks and shelves are the fundamental building blocks of the ODF, located in central offices, headends, POP’s or customer premises sites. Capable of handling large volumes of fiber in a consistent and structured manner, they can be integrated with existing installations, and can be tailored to meet specific needs. Diverse infrastructure architectures can be handled due to a wide range of possible combinations. Identification systems are integrated for registration purposes. Total fiber management can be maintained throughout.

Shelves	Single circuit	Single element	Tray patching	Front patching	Patchpanel	19"	Metric (ETSI)
Splicing shelf (FIST-GSS2/GSS3)	•	•				•	•
Frontpatching shelf (FIST-FPS)				•		•	•
Frontpatching shelf (FOMS-FPS)		•		•		•	
Frontpatching shelf (FPS-A/B)		•		•		•	
Patching & splicing shelf (FIST-GPS2/GPS3)		•	•			•	•
Mixed shelf (FIST-GMS2)	•	•			•	•	•
	Splicing & fiber management		Patching layout			Rack type	

## Racks

FIST-GR3  
High capacity racks with extensive configuration capabilities



FOMS-FPS



FIST-GPS2



FIST-GSS2



## The external plant elements

Tyco Electronics's environmentally-sealed closures enable all fiber management functions to take place in the external network between the exchange and the fiber termination point.

Designed for cable chamber, track, and spur joints as well as external nodes, Tyco Electronics's closures are independent of network topology, are compatible with all cable types, and can be tailored to almost any required configuration. Total fiber management can be maintained throughout.

Closures	Single circuit	Single element	Mass		Heat-shrink	Cold applied	In-line	Butt	Aerial	Buried	Underground
Closure organizer (FIST-GCO2)	•	•			•			•	•	•	•
Gel-sealed closure (FIST-GCOG2)	•	•				•		•	•	•	•
Sewage closure organizer (FIST-SCO2)	•	•			•			•	•	•	•
Splice closure (FOSC-400)		•	•		•			•	•	•	•
Splice closure (FOSC-450)		•	•			•		•	•	•	•
In-Line gel-sealed closure (FOSC-500/600)		•	•			•	•		•	•	•
Cross-connect closure (FOSC-DMARC)		•		•	•			•	•		•
Heat-shrink in-line closure (XAGA-FOSC)		•	•		•		•			•	•
Splice closure (FOSC-OPGW)	•	•	•		•			•	•		
Outdoor fiber distribution closure (OFDC)		•				•		•	•	•	•
Outdoor fiber drop repair (OFDR)		•				•	•	•	•	•	•
	Splicing & fiber management			Patching	Cable sealing		Closure		Application		

## Cabinet

FIST-CAB5

Street cabinet with interconnect and cross-connect capabilities



OFDC



FOSC-400



FIST-GCO2





# Customer premises elements

Tyco Electronics’s range of boxes provide environmental and mechanical protection for fiber management systems at the termination point of the fiber network.

They have a wide range of capacities and functions, and can be tailored to almost any required configuration. Total fiber management can be maintained throughout.

Boxes	Single circuit	Single element	Mass			Indoor	Outdoor
Generic box (FIST-GB2)	•	•		•	•	•	•
Medium box-splicing (FIST-MB2-S)	•	•		•	•	•	
Medium box-termination (FIST-MB2-T)	•	•		•	•	•	
Small box (FIST-SB2-8)	•			•	•	•	•
Compact termination box (FIST-CTB2-4)	•			•	•	•	•
Customer premises wall outlet (CPWO)	•			•	•	•	
Indoor fiber distribution box (IFDB)		•		•	•	•	
	Splicing & fiber management			Patching	inner security cover	Application	

FIST-MB2



CPWO



IFDB-M



FIST-CTB2-4



FIST-SB2-8



FIST-GB2



## Accessories

Tyco Electronics's wide range of fiber accessories is designed to support and enhance the performance of fiber management systems.

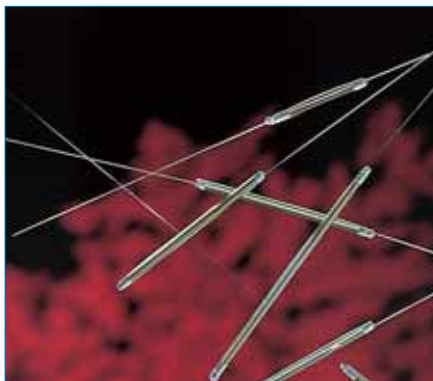
### LIGHTRAX

Ducting system designed for fiber networks, respecting minimum bend radii.



### SMOUV

Range of heat-shrink sleeves for fiber optic fusion splices to provide mechanical and environmental protection at the fusion joint area.



### RECORDsplice

Innovative fiber splicing system.



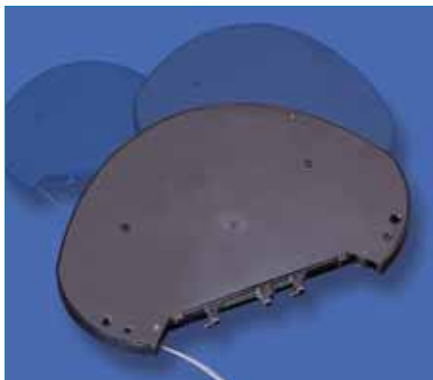
### XPRES drop

Pre-terminated drop cables with integrated strain relief.



### FIST-FSASA2

Field installable assembly containing FBT and planar splitters.



### Pigtails & Jumpers

A comprehensive range of standard and low loss pigtails, jumpers and connector adapters.



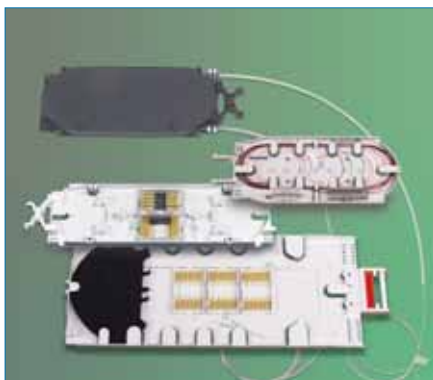
### OCM

Wideband couplers/splitters or filter devices in LGX compatible module.



### FOSC-OC

Wideband couplers/splitters in FOSC trays.



### FOSC-OC-XC

Coarse wavelength division multiplexing in FOSC trays.

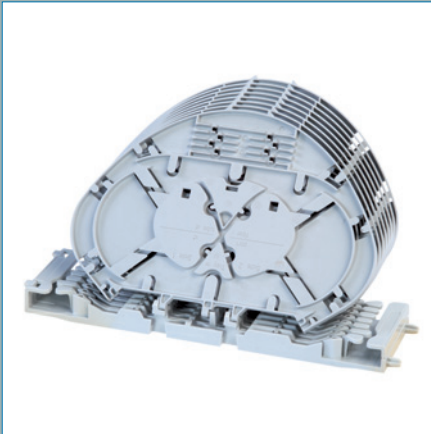


Tyco Electronics's fiber product range is based on a modular design concept using common building blocks. This commonality of parts and components makes Tyco Electronics's products highly cost-effective in terms of inventory, training, installation and maintenance.

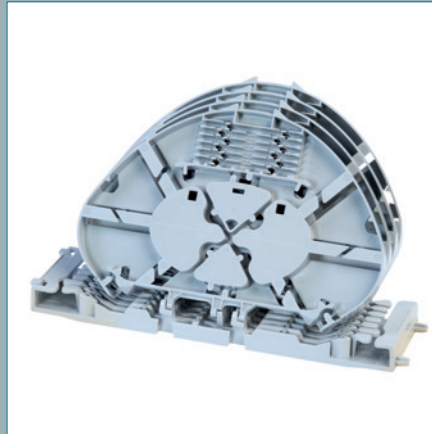
Networks can be configured and reconfigured according to specific application needs, and changing technical and operational requirements.

The modular approach can handle any combination of ring, point-to-point or multipoint systems, and can be integrated with a wide variety of existing civil infrastructures, cable types and fiber volumes.

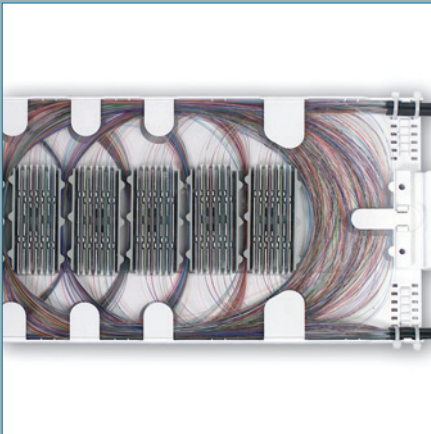
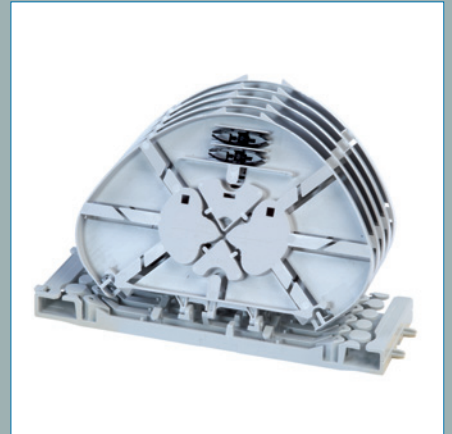
Single circuit sub-assembly with SC trays



Single element sub-assembly with SE trays



Ribbon sub-assembly with ribbon trays



Mass-splicing sub-assembly FOSC tray

Tyco Electronics's fiber product range can handle single circuit, single element and mass-splicing management.

- Single circuit management allows individual circuits to be managed without disturbing others.
- Single element management allows fibers to be managed according to their cable construction.
- Single ribbon management allows fibers to be managed according to the ribbon type.
- Mass-splicing is used on high fiber counts when individual fiber access or maintenance is not required.

For single circuit, single element and single ribbon management, Tyco Electronics's FIST range provides the most comprehensive solution.

Mass or single element fiber management can be handled by Tyco Electronics's FOSC and FibrBoss product lines.

Furthermore, both product ranges facilitate easy integration of passive devices (e.g. splitters).

Tyco Electronics's products deliver a competitive advantage by meeting stringent demands for performance and reliability. Innovative Tyco Electronics components and systems are used in telecommunications, electronics, transportation, infrastructure and energy networks markets throughout the world.

---

FIST, FOSC, SMOUV, Lightrax, RECORDsplice, TE (logo) and Tyco Electronics are trademarks of the Tyco Electronics group of companies and its licensors.

The information given herein, including drawings, illustrations and schematics which are intended for illustration purposes only, is believed to be reliable. However, Tyco Electronics makes no warranties as to its accuracy or completeness and disclaims any liability in connection with its use. Tyco Electronics' obligations shall only be as set forth in Tyco Electronics' Standard Terms and Conditions of Sale for this product and in no case will Tyco Electronics be liable for any incidental, indirect or consequential damages arising out of the sale, resale, use or misuse of the product. Users of Tyco Electronics products should make their own evaluation to determine the suitability of each such product for the specific application.

Tyco Electronics Raychem bvba  
Diestsesteenweg 692  
B-3010 Kessel-Lo, Belgium  
Tel 32-16 351 011 (USA)1-919-557-8900  
Fax 32-16 351 697 (USA)1-919-557-8498  
[www.tycoelectronics.com](http://www.tycoelectronics.com)  
[www.telecomosp.com](http://www.telecomosp.com)

TC 520/BR/13 11/09

