



# GSIC

## Gel seal for in-line and antenna connectors

The GSIC gel closure is a weatherproofing system sealing jumper-to-feeder and jumper-to-antenna connectors, exposed to the outside environment.

The housing contains an innovative gel material and provides an efficient moisture block.

The ease of installation and the long term protection makes it a reliable and cost-effective solution.

- Sealing properties of the gel provide a reliable protection over a wide temperature range (-30°C/+ 60°C)
- Wraparound and no disconnection of the connector
- Quick and easy to install
- Easy removable and re-usable
- Gel material provides an effective barrier against ingress of water and other contaminants - IP rating 68
- No tape, no mastics or tools required for installation and removal

Kit content

- Central part(s) with integrated gel seal
- Closing channel(s)
- Installation instruction

Sizing/ordering information (dimensions in mm)

In-line transitions

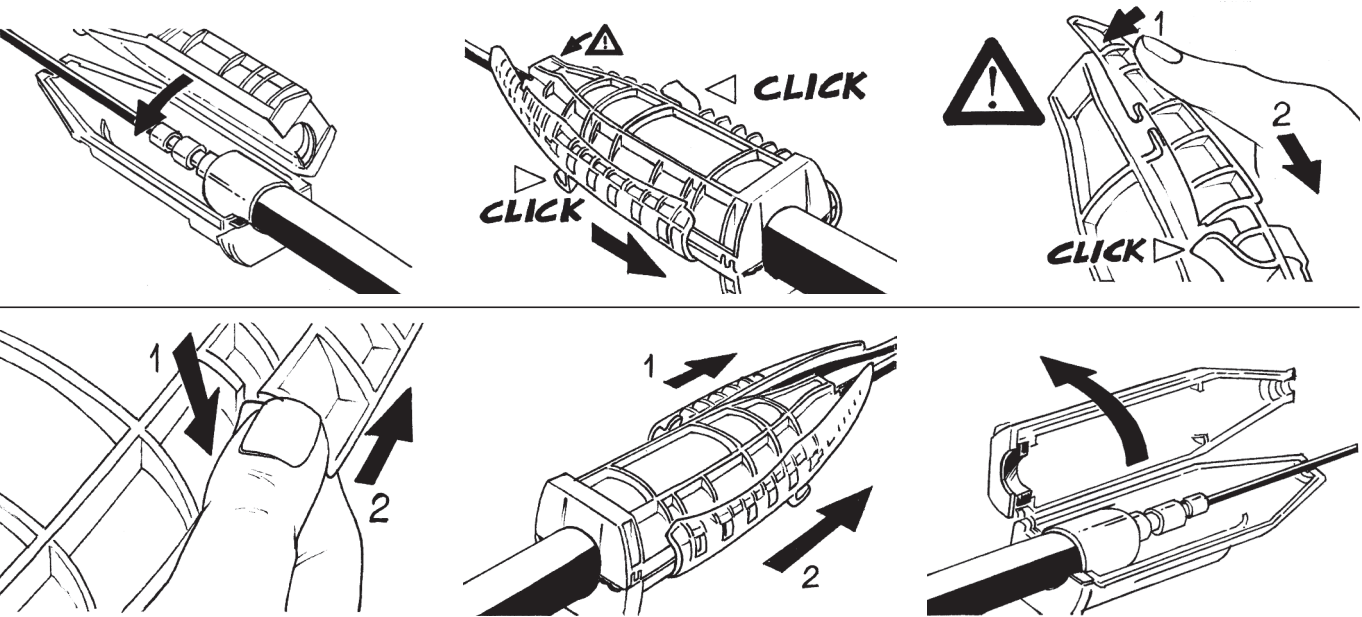
| Product description | Cable range |         | Maximum connector dimensions |          |
|---------------------|-------------|---------|------------------------------|----------|
|                     | Jumper      | Feeder  | Length                       | Diameter |
| GSIC-1/2-7/8        | 13-17       | 27-29   | 147                          | 43       |
| GSIC-1/2-1 1/4      | 13-17       | 38-40   | 187                          | 56       |
| GSIC-1/2-1 5/8      | 13-17       | 49,5-52 | 208                          | 68       |

Antenna transitions

| Product description | Cable range<br>Jumper | Maximum connector dimensions |          |                                |            |
|---------------------|-----------------------|------------------------------|----------|--------------------------------|------------|
|                     |                       | Length                       | Diameter | Nut diameter<br>(hex/circular) | Nut height |
| GSIC-1/2-ANT-S      | 13-17                 | 60                           | 26,6     | 32                             | 12,5-16    |
| GSIC-1/2-ANT-L      | 13-17                 | 117                          | 26       | 32                             | 16-23,5    |

Tested according to Mil. Std. 810G/521.3

Installation steps (example GSIC-1/2-1 5/8)



TE (logo) and TE Connectivity are trademarks of the TE Connectivity group of companies and its licensors.

The information given herein, including drawings, illustrations and schematics which are intended for illustration purposes only, is believed to be reliable. However, TE Connectivity makes no warranties as to its accuracy or completeness and disclaims any liability in connection with its use. TE Connectivity's obligations shall only be as set forth in TE Connectivity's Standard Terms and Conditions of Sale for this product and in no case will TE Connectivity be liable for any incidental, indirect or consequential damages arising out of the sale, resale, use or misuse of the product. Users of TE Connectivity products should make their own evaluation to determine the suitability of each such product for the specific application.

Tyco Electronics Raychem bvba  
Diestsesteenweg 692  
3010 Kessel-Lo, Belgium  
Tel 32-16 351 011 (USA)1-919-557-8900  
Fax 32-16 351 697 (USA)1-919-557-8498  
www.te.com  
www.telecomnetworks.com  
TC 567/DS/5 07/12

