

## LSA-PLUS HDS MODULE

Switching equipment and distribution systems are being increasingly moved out of central exchanges and re-located closer to customers. The ongoing development of existing networks, expanded portfolios of network suppliers and the implementation of IP services require additional space in the network structures in the “last mile” to subscribers. Here, the topmost priority is to achieve the highest degree of flexibility, reliability and circuit density with simultaneous overvoltage protection in place.

The LSA-PLUS HDS module meets the demand for high-density while delivering high-quality overvoltage protection through LSA-PLUS or third party connection technology.

### APPLICATIONS

- Suitable for use in all communication networks (POTS, DSL and IP networks)
- VDSL2 and vectoring compatible
- Used in outdoor shelters to protect DSLAM or MSAN equipment in next generation networks against lightning strikes and overvoltage

### FEATURES AND BENEFITS

- Insulation displacement contacts on front and rear
- Built-in surge voltage protection. The active equipment is always protected against voltage surges by integrated single pair surge voltage protection plugs. This results in significant cost savings and high service availability.
- Highest contact reliability using silver-plated IDC contacts
- Optimum circuit density with 13.5 mm mounting grid dimensions; increases available space
- Star quad cable management guides for assembly of reliable, robust cable harnesses
- Compatible with all wiring practices; uses standard LSA-PLUS insertion or other industry-standard insertion tool

The LSA-PLUS HDS module consists of an eight-pair lower part permanently connected to the system cable of the IP DSLAM or MSAN. It can be used as a piece part for the manufacturing of pre-connectorized cable harnesses to speed installation time in the street cabinet. Alternatively, it can be installed on-site using the LSA-PLUS insertion tool. To achieve the best transmission performance and minimize near-end cross talk, the module features wire bundle holes for strain relief as well as a star-quad arrangement of connected cable.

The lower part of the module is installed on an LSA-PLUS HDS backmount frame. The integrated earth bar makes direct connection to the frame.

The upper part of the module is formed by eight single-pair plugs with integrated overvoltage protection and IDC contacts to connect jumper wires. The IDC contacts can be either LSA-PLUS style or other industry standard types, in order to be easily integrated in all distribution areas, independently from the use of LSA-PLUS or other types of connectivity.

### PRODUCT SPECIFICATIONS

#### ELECTRICAL PROPERTIES

<b>Insulation resistance</b>	>5 x 10 <sup>4</sup> MΩ at 500V
<b>Alternating voltage strength</b>	2 kVrms
<b>Impulse resistance voltage (1.2/50 μs)</b>	3.6 kV
<b>Contact resistance</b>	5 MΩ
<b>Conductor diameter, equipment wire</b>	0.35 mm to 0.63 mm
<b>Surge voltage protection</b>	230 V, 5 kAmps, with fail-safe
<b>Other options upon request</b>	

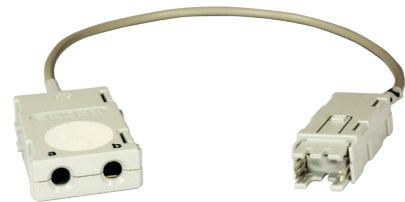
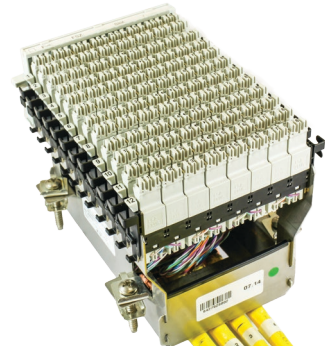
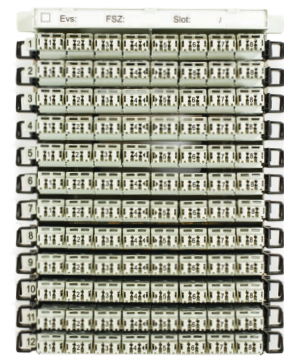
#### MECHANICAL PROPERTIES

<b>Flammability (module) according to UL94</b>	VO
<b>Dimensions (H x W x D)</b>	10 x 134 x 61 mm
<b>Vertical grid dimension</b>	13.5 mm
<b>Contact surface</b>	Silver-plated
<b>Umber of plug-in cycles</b>	20
<b>Number of re-terminations</b>	50
<b>Temperature range operation</b>	-5° to +80° C
<b>Temperature range storage</b>	-40° to +90° C

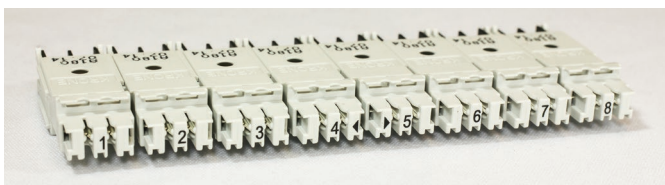
# LSA-PLUS HDS MODULE

## ORDERING INFORMATION

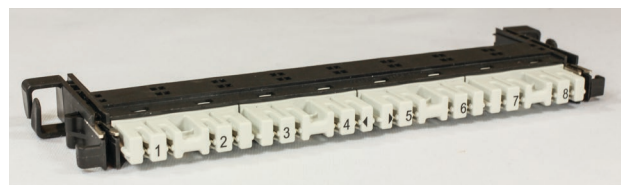
Description	Ordering number
<b>LSA-PLUS HDS modules</b>	
8-pair connection module 8-pair base with 8 one-pair modules	HDS-7042 2 400-00
8-pair cable side module 8-pair base <b>only</b>	HDS-7042 2 401-00
8-pair connection module 8-pair base with 8 one-pair modules. Modules compatible with commercially available insertion tool	HDS-7042 2 404-00
Jumper side one-pair modules	HDS-7042 2 402-00
Jumper side one-pair modules (compatible with commercially available insertion tools)	HDS-7042 2 403-00
<b>Cable head backmount frames</b>	
For 72 pairs; <u>without</u> modules Accommodates 9 modules + 1 label holder Height: 135mm Includes mounting hardware	HDS-7042 2 420-00
For 96 pairs; <u>without</u> modules Accommodates 12 modules + 1 label holder Height: 180mm Includes mounting hardware	HDS-7042 2 421-00
<b>Additional accessories</b>	
2-pair HDS test cord	HDS-7042 2 410-00
Plug numbers (1/12); right side	HDS-7042 2 411-00
Label holder for mounting bracket	HDS-7042 2 412-00



HDS-7042 2 410-00



HDS-7042 2 402-00



HDS-7042 2 400-00 - Cable Side Module (base)

For more technical options and order quantity information, please consult the product ordering guide or your local sales representative.

### te.com

FIST, TE Connectivity, TE connectivity (logo) and Every Connection Counts are trademarks. All other logos, products and/or company names referred to herein might be trademarks of their respective owners.

The information given herein, including drawings, illustrations and schematics which are intended for illustration purposes only, is believed to be reliable. However, TE Connectivity makes no warranties as to its accuracy or completeness and disclaims any liability in connection with its use. TE Connectivity's obligations shall only be as set forth in TE Connectivity's Standard Terms and Conditions of Sale for this product and in no case will TE Connectivity be liable for any incidental, indirect or consequential damages arising out of the sale, resale, use or misuse of the product. Users of TE Connectivity products should make their own evaluation to determine the suitability of each such product for the specific application.

© 2015 TE Connectivity Ltd. family of companies All Rights Reserved.

319939BE 02/15 Original

### PRODUCT SHEET

**TE Connectivity**  
**Broadband Network Solutions - EMEA**

Diestsesteenweg 692  
3010 Kessel-Lo, Belgium

Tel 32-16 351 011  
[www.te.com/bns](http://www.te.com/bns)

Tyco Electronics Raychem bvba,  
a TE connectivity company.